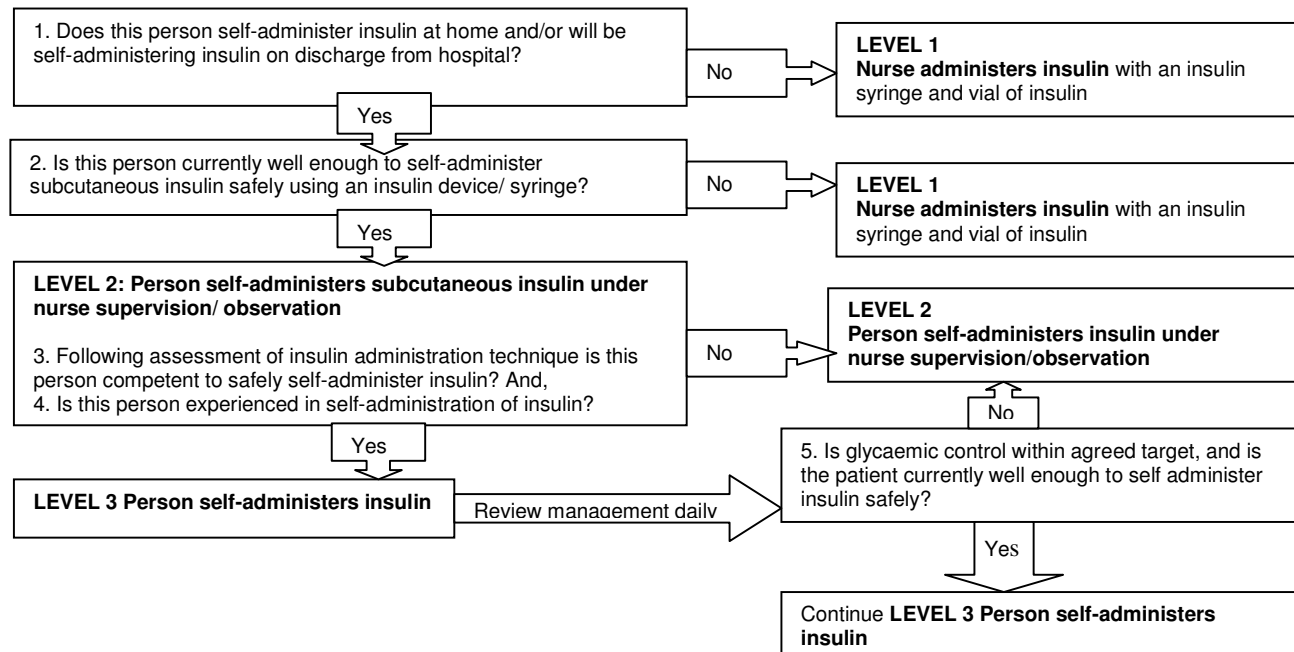


Assessment for Self Administration of Medicine (SAM) Subcutaneous Insulin In Hospital	Name
	DOB CHI
	Date

The flow chart provides guidance for assessment of administration of subcutaneous insulin in hospital.
 Insulin must be prescribed as per NHS Tayside prescribing policy
 Competency information : Treatment with Insulin www.diabetes-healthnet.ac.uk



Nursing guidelines and summary of SAM (subcutaneous insulin) levels	
LEVEL 1	No self-administration activity. Administer prescribed subcutaneous insulin and document as per trust policy. Ensure insulin preparation is available in a vial (insulin pen devices are designed for self use only). Monitor blood glucose using quality controlled hospital meter. Report suboptimal glycaemic control to medical staff for review of current management. Plan and facilitate appropriate support for discharge. Provide a supply of insulin syringes and prescribed insulin in a vial at discharge.
LEVEL 2	Nursing staff supervise self administration Supervise/observe subcutaneous insulin administration and document as per trust policy. Provide sharps disposal unit and a safe repository for insulin storage. Monitor blood glucose using quality controlled hospital meter. Report suboptimal glycaemic control to medical staff for review of current management. This level is suitable for patients requiring support /supervision of insulin administration during hospital admission and includes those people who are learning to self administer insulin. Plan and facilitate appropriate support for discharge.
LEVEL 3	Self administration of subcutaneous insulin For safety reasons all insulin administration must be documented on insulin prescription and diabetes monitoring chart. Provide sharps disposal unit and a safe repository for insulin storage. Monitor blood glucose using quality controlled hospital meter. Review glycaemic control and facilitate insulin prescription adjustment as required to optimise glycaemic control. This level is suitable for people who wish to maintain maximum independence during hospital admission. This level is suitable for people who adjust their mealtime rapid acting insulin dose according to the carbohydrate content of their food.

